

HiSpec 3 Megapixel Images at 1,000 FPS



Fast Facts

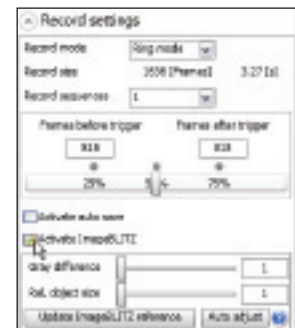
- **Outstanding Image Quality:** Up to 1,000 frames per second at 1280 x 1024 resolution
- **Extremely Fast:** Stepless adjustable frame rate up to 93,000 frames per second
- **Well Connected:** GiGE compatible for easy remote camera control
- **Fits Anywhere:** Only 69mm H x 93mm W x 92mm D, C-Mount and .9 kg.
- **GiGE Vision:** Industry standard control interface



Easy to use
Camera Control
Software



ImageBLITZ® Auto
Trigger feature
based on selectable
region of interest



Key Features

- **Optional ImageBLITZ® Auto Trigger** – Now it's easy to capture those elusive random events. Simply define a "region of interest" in the field of view and let the ImageBLITZ® trigger take over. Any change in the pre-set image area will stop the recording and save the event sequence. No special hardware or intrusive wiring is required.
- **Optional Hi-G Configuration** - The HiSpec 3 has been certified to 100 "G" accelerations making it the ideal combination of ruggedness with small size. Fits into tight spaces for on-board automotive impact testing, military ordinance testing and other harsh environments. The built-in battery operates in three modes:
 - Ensures fail-safe operation in the event of a power loss
 - Allows "untethered" operation for up to 1 hour
 - Has image retention mode of up to 24 hours
- **Use it Everywhere** – The HiSpec 3's Gigabit Ethernet interface allows the user to operate multiple cameras from any standard Notebook / PC up to a distance of 100 meters. The HiSpec 3 is designed for easy operation in virtually any industrial or laboratory environment.

See what you've been missing

Fastec HiSpec3

Camera Specifications

Standard Features

System Design

Scaleable and network-compatible with standard and/or notebook PCs
Synchronous processing of multiple cameras

Sensor

CMOS sensor, 1280 x 1024 pixels, 8-bit monochrome or RGB color with BAYER filter
Active pixel area 19.7mm diagonal

Pixel Size

12 x 12 μ m

Power Consumption

15W maximum

Spectral Bandwidth

400 - 800 nm

Recording Rate

Up to 1,000 fps at full resolution, up to 93,282 fps at reduced resolution

Image Memory

4GB standard. Optional upgrade to 8GB

Recording Time

1.5 seconds at full resolution.

Longer record times with variable resolution and frame rates

Shutter

Global electronic shutter from 2 μ sec to 1 second

Lens Mount

C-Mount, F-Mount optional

Frame Format

BMP, TIF, DNG, JPG or AVI file format

Camera / PC Interface

1000/100 Ethernet interface (Gigabit Ethernet)

Phase Lock

Multiple cameras can be synchronized to a master camera or to an external source such as optional IRIG-B

Trigger

Contact closure, external TTL signal or software trigger (ImageBLITZ® Auto Trigger)

Camera Size

69mm H x 93mm W x 93mm D with C-Mount

63mm H x 93mm W x 128mm D with F-Mount

Camera Weight

.9 kg. without lens

Operating Environment

+ 5° to + 45°C

Power Supply

10.5 - 24V DC external power supply

Software Specifications

Camera Control Software

HiSpec Director 2 software for Windows 7/Vista/XP

Optional SDK

GiGE Vision compatible 

Options Available

Memory

8GB

Auto Trigger

ImageBLITZ® Software – Auto Trigger

Multi-Sequence Mode

2, 4, 8 or 16 individual recording partitions

IRIG-B

Range timing standard

Hi-G Certified

Certified for shock to 100g for 25ms, vibration to 10g

F-Mount Adapter

Convert from C-Mount lenses to F-Mount lenses

Phoenix Interface Plug

Industrial standard Phoenix interface plug

Sample Frame Rates and Resolutions

Maximum Frame Rate	Resolution	4GB Standard		8GB Option	
		Recording Time @ Maximum Frame Rate	Total Frames	Recording Time @ Maximum Frame Rate	Total Frames
1,000 fps	1280 x 1024	1.5 sec	1,500	3 sec	3,000
2,000 fps	1280 x 512	1.5 sec	3,000	3 sec	6,000
5,000 fps	1280 x 204	1.5 sec	7,500	3 sec	15,000
7,000 fps	1280 x 146	1.8 sec	12,450	3.6 sec	24,900
10,000 fps	1280 x 102	1.5 sec	15,000	3 sec	30,000