


TRACKREPORT

TEST ANALYSIS & REPORT GENERATION SOFTWARE

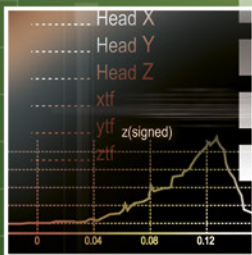
 ASAM Compliant

REPORT GENERATION

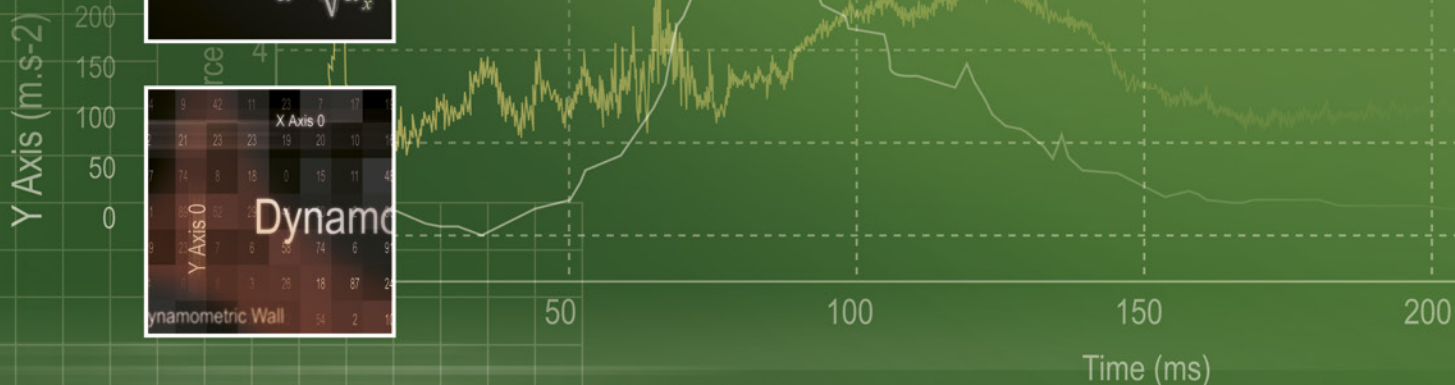
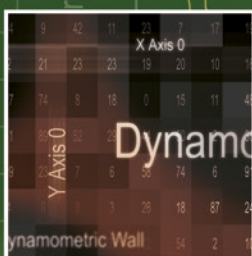
- Graphic design of test report models
- Automatic channel assignment
- Curve and video synchronization
- Various exports (html, avi...)

ALGORITHM DEVELOPMENT

- Standard & specific calculation libraries
- Automotive biomechanical criteria
- Acoustic library



$$a = \sqrt{a_x^2 + a_y^2 + a_z^2}$$
$$HIC = \sup_{t_1, t_2} \left\{ \frac{1}{t_2 - t_1} \int_{t_1}^{t_2} a^2 dt \right\}$$
$$a = \sqrt{a_x^2 + a_y^2 + a_z^2}$$

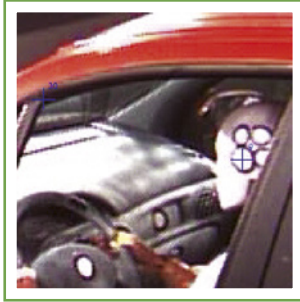


Head X
Head Y
Head Z
xtf
ytf
ztf



ORME
Signals & Images

DATA ANALYSIS



TrackReport offers a full data visualization and analysis environment, where interactivity and automation help creating simulation or test reports. Configurable report models handle data post-processing algorithms as well as the graphical setup. The development of these report models is very intuitive and smooth, thanks to the various calculus libraries and a complete and dynamic graphical object suite: text areas, curves, tables, images, videos, color maps, bar charts, 3D-animations... The report models thus enable the generation of an accurate data set analysis and the corresponding report.

Although being a standard and generalist tool, TrackReport's architecture remains open, enabling the user to develop specific data import/export functions, or new calculus libraries. TrackReport is now widely used to analyze and compare test and simulations in various fields: automotive, aeronautics, spatial, cosmetics, energy, defense...

EASY TO USE

- Graphical setup of test report models*
- Computer-aided algorithm development*
- Automated unit management*

INTERACTIVITY

- Interactive report models through customized dialog boxes*
- Cursors, animations...*

AUTOMATION

- Automation of report edition tasks*
- TrackReport control and interactivity with other applications*

ANALYZE

- Superposition mode for data set comparison*
- 3D visualization, synchronizations, and animated exports*

COMPATIBILITY

- Import of various data file formats*
- ASAM-ODS database connection*

OPENNESS

- Plug-in architecture for calculation and import/export functions*
- Software development kit for new functions*

MODULES

TRACKREPORT STANDARD EDITION



Report model creation

- Graphical creation of test report models
- Dynamic text areas, 2D-curves, bar charts, tables, color maps, images, videos, image sequences



Import of various data formats

- Standard formats
- ASCII files reader wizard
- Specific imports plug-in

$$F = \sqrt{m \cdot a_x}$$

with:
 m Mass of the head
 a_x head acceleration
 F_x upper neck force

Calculus libraries

- Mathematics, statistics, interpolation...
- Dialog boxes definition
- Specific libraries plug-in



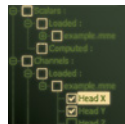
Automatic report generation

- Interactive analyses
- Animations, cursors
- Data synchronization
- Data set comparison/superposition



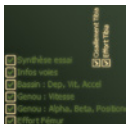
Automated unit management

- Smooth unit recognition, conversion and management
- Automatic learning of new units



Results and data exports

- Standard formats
- ASCII formats
- Specific exports plug-in



Report export

- Animated HTML reports
- Image exports
- Print...

```
Function: a1000  
C = curve + Erack  
return (curve)  
end  
for i = 1, nbPp  
t[i] = t1  
a[i] = a1000
```

User programming

- TrackL Language, Visual C++ SDK
- Tasks automation using Java Scripts



ASAM-ODS Client Module

- ASAM-ODS database connection
- Data import/export
- Advanced search



Crash-Tests Calculations Module

- CFC filters, biomechanical criteria (neck, head, chest, leg...)
- Restraint systems norms
- Regulation implementation



3D Module

- 3D graphical object
- VRML import / export
- Navigation and animations



Acoustic Calculations Module

- A, B, C weighting, narrow-band, octave or third-octave conversion, OASPL, PNL, TC...
- Regulation implementation

SERVICES

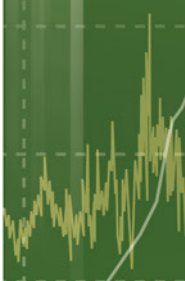
- Report model writing
- Report model maintenances
- Specific calculus libraries development
- Specific import/export formats development

TRAINING

- TrackReport standard use
- TrackL language development
- Java Script for TrackReport
- Visual C++ plug-in development

Y Axis (m.s⁻²)

200
150
100
50
0



Founded in 1996, ORME is your partner for the development of test analysis tools. To meet the increasing needs of the test field, on the one hand we develop a complete software product suite, and on the other hand we can offer custom-made software and hardware solutions, as well as test analysis service and consulting.

We pay particular attention to keep a very close relationship with our customers, and remain attentive to their needs. Over twenty years of experience have enabled us to become a well-recognized and favored key contact of many industrialists.

SOME OF OUR CUSTOMERS:

Airbus, Airbus Defense & Space, ARAI, Autoliv, Bosch, Brakes India, BMC, CEA, CED, CNES (CSG Kourou), DGA, Delphi, Dongfeng-Peugeot, Dorel, EDF, Faiveley Transport, Faurecia, Fujian-Benz, Harris, ICAT, IFSTTAR, Karma, Latécoère, LIFT by Encore, L'Oréal, Leroy Somer, LIFT, Maruti Suzuki India, MGA Research, Nissan, ONERA, L'Oréal, Peugeot-Citroën, Proma, RATP, Renault, Salomon, Schneider Electric, SAFRAN Helicopter Engines, SAFRAN Aircraft Engines, SAFRAN Landing Systems, STAC, Saint Gobain, Team-TEX, Thalès Alenia Space, Tisséo, TSTech, UTAC, Valeo, Zodiac Aerospace...



FRANCE - HEADQUARTERS

ORME

21 rue du Village d'Entreprises, bât. 7 - 31670 Labège, FRANCE
Tel. +33 561 00 25 70 - Fax +33 561 00 26 80
www.orme.com - info@orme.com

CHINA - Aeronautics & Space

iSource Innovation Technology Ltd

Yingdu Building, Zhichun Road, Haidian District, CHINA
Tel. 010-58732236 - Fax 010-58732237
www.isourceinv.com

CHINA - Automotive

TStech

B608-610 Tsinghua - Tongfang - High-Tech plaza
N°1 Wangzhuang Road - Haidian District
Beijing - 100083, P.R. CHINA
Tel. +86 10 82366086 - Fax +86 10 82366085
www.ts-tech.com.cn - info@ts-tech.com.cn

INDIA

Megatech Engineering & Services Pvt Ltd

A2/10 Tapovan, Dongre Park, Chembur, Mumbai
400074, INDIA
Tel. +91-22-2553 6023; 2553 4471; 2553 7579
Fax +91-22-2553 2317
megafive@vsnl.com

NORTH AMERICA

Arnaud Seigne

2 Bloor Street West - Suite 700, Toronto, ON M4W 3E2, CANADA
Mob. +1 647 917-1711
www.orme.com - info@orme.com

USA

Hyper-Imaging

Irving, TX - Tel. +1 949 233 2433
www.hyper-imaging.com - douglas.cebik@hyper-imaging.com

JAPAN

TOYO Corporation

1-6, Yaesu 1-chome, Chuo-ku, Tokyo 103-8284, JAPAN
Tel. +81-3-3279-0771 - Fax +81-3-5205-2030
www.toyo.co.jp

BENELUX - SPAIN - PORTUGAL

IDT Europe bvba

Eekhoornstraat 22 - B-3920 Lommel, BELGIUM
Tel. +32 11 551065
www.idteurope.eu - info@idteurope.eu

UK

IDT (UK) Ltd

Eastway House - 7 Paynes Park, Hitchin
Herts SG5 1EH, UNITED KINGDOM
Tel. +44 (1462) 621124
www.idtvision.co.uk - drudeforth@idtvision.com