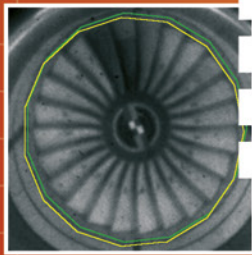


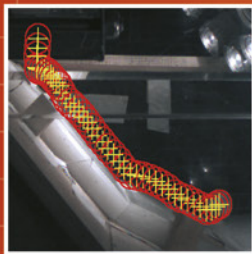
# TRACKIMAGE

MOTION ANALYSIS SOFTWARE

0.010  
0.008  
0.006  
0.004  
0.002  
0.000



CAMERA CORRECTIONS  
2D & 3D MOTION TRACKING  
DEFORMATION TRACKING  
VIRTUAL OBJECTS  
AIR-BAG



0.000  
-0.010  
-0.020  
-0.030  
-0.040  
-0.050

14 9 42 11 23 7 17 19

2 21 23 23 19 20 10 16

27 74 8 18 0 15 11 48

89 52 29 44 50 2 36

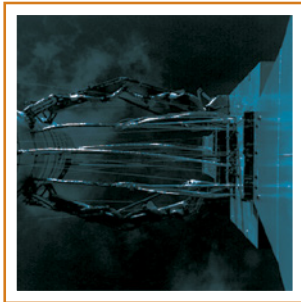
23 7 6 58 74 6 91

6 8 3 26 18 27 24

17 12 37 12 54



# MOTION ANALYSIS



TrackImage provides several independent modules, each of them being dedicated to a special application, with a fully automatized analysis of the image sequences: trajectography, deformation tracking, objects inlay and contact analysis, air bag expansion, speed field calculation... TrackImage calculates all the dynamic parameters of the system under test: positions, speeds, accelerations, distances, angles, surfaces, compacity, frequencies...Based on the most recently developed algorithms, TrackImage is today a most powerful image analysis software tool which is used in many different fields: aeronautics, automotive, defense, energy, ergonomy, biology, geology, space, sports...

## ACCURATE

*Image calibration, correction of spatial distortion, sub-pixel resolution...*

## ROBUST

*Robust and accurate tracking through optimized algorithms, confidence rate calculation for every detection...*

## POWERFUL

*The points to track do not need to be marked, algorithm parametrization, post-processing...*

## EASY TO USE

*On line hypertext documentation, ergonomic interface...*

## REPORTING

*Complete interactive report editing, AVI files export, spatial and temporal test synchronization...*

## SERVICE

*On site installation/user training, hot-line support, specific image sequences analysis...*

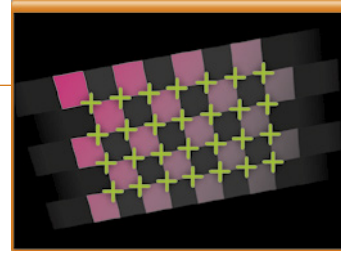
## COMPATIBILITY

*Read all digital image formats and AVI sequences, export results, copy/paste function...*

# MODULES

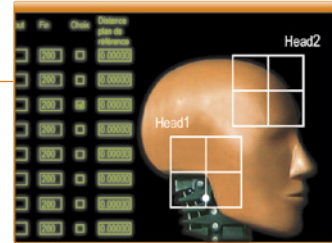
## CAMERA CORRECTIONS

- Optical distortions
- Perspective effect



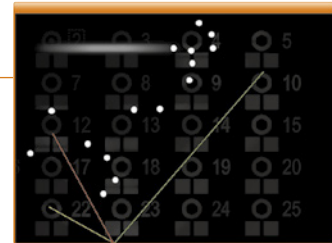
## 2D-MOTION TRACKING

- Automatic motion tracking
- Position, speed and acceleration calculations
- Frequency analysis
- Multi-tests synchronization and animations



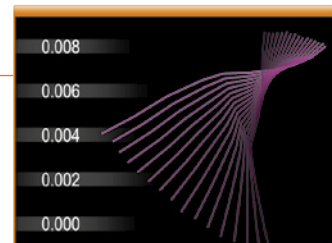
## 3D-MOTION TRACKING

- 3D-space calibration
- Automatic 3D-trajectory graphy
- Post-processing and analysis



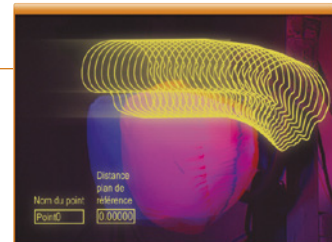
## DEFORMATION TRACKING

- Automatic deformation tracking
- Curvature, speed and acceleration calculations
- Closed or open contour tracking



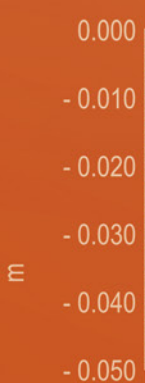
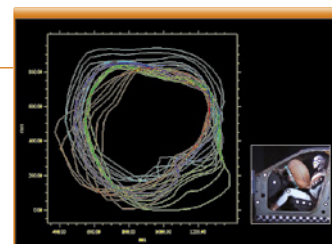
## VIRTUAL OBJECTS

- Virtual or real objects dynamic superposition
- Virtual targets, virtual contours, masks, logos, texts...
- Spatial and time synchronization of sequences
- Inter-objects contact analysis



## AIR-BAG

- Automatic air-bag deployment tracking
- Tests comparison and validation
- Automatic surface area calculation, edges, length and width tracking



Founded in 1996, ORME is your partner for the development of test analysis tools. To meet the increasing needs of the test field, on the one hand we develop a complete software product suite, and on the other hand we can offer custom-made software and hardware solutions, as well as test analysis service and consulting.

We pay particular attention to keep a very close relationship with our customers, and remain attentive to their needs. Over twenty years of experience have enabled us to become a well-recognized and favored key contact of many industrialists.

## SOME OF OUR CUSTOMERS:

Airbus, Airbus Defense & Space, ARAI, Autoliv, Bosch, Brakes India, BMC, CEA, CED, CNES (CSG Kourou), DGA, Delphi, Dongfeng-Peugeot, Dorel, EDF, Faiveley Transport, Faurecia, Fujian-Benz, Harris, ICAT, IFSTTAR, Karma, Latécoère, LIFT by Encore, L'Oréal, Leroy Somer, LIFT, Maruti Suzuki India, MGA Research, Nissan, ONERA, L'Oréal, Peugeot-Citroën, Proma, RATP, Renault, Salomon, Schneider Electric, SAFRAN Helicopter Engines, SAFRAN Aircraft Engines, SAFRAN Landing Systems, STAC, Saint Gobain, Team-TEX, Thalès Alenia Space, Tisséo, TSTech, UTAC, Valeo, Zodiac Aerospace...



### FRANCE - HEADQUARTERS

**ORME**  
21 rue du Village d'Entreprises, bât. 7 - 31670 Labège, FRANCE  
Tel. +33 561 00 25 70 - Fax +33 561 00 26 80  
[www.orme.com](http://www.orme.com) - [info@orme.com](mailto:info@orme.com)

### CHINA - Aeronautics & Space

**iSource Innovation Technology Ltd**  
Yingdu Building, Zhichun Road, Haidian District, CHINA  
Tel. 010-58732236 - Fax 010-58732237  
[www.isourceinv.com](http://www.isourceinv.com)

### CHINA - Automotive

**TStech**  
B608-610 Tsinghua - Tongfang - High-Tech plaza  
N°1 Wangzhuang Road - Haidian District  
Beijing - 100083, P.R. CHINA  
Tel. +86 10 82366086 - Fax +86 10 82366085  
[www.ts-tech.com.cn](http://www.ts-tech.com.cn) - [info@ts-tech.com.cn](mailto:info@ts-tech.com.cn)

### INDIA

**Megatech Engineering & Services Pvt Ltd**  
A2/10 Tapovan, Dongre Park, Chembur, Mumbai  
400074, INDIA  
Tel. +91-22-2553 6023; 2553 4471; 2553 7579  
Fax +91-22-2553 2317  
[megafive@vsnl.com](mailto:megafive@vsnl.com)

### NORTH AMERICA

**Arnaud Seigne**  
2 Bloor Street West - Suite 700, Toronto, ON M4W 3E2, CANADA  
Mob. +1 647 917-1711  
[www.orme.com](http://www.orme.com) - [info@orme.com](mailto:info@orme.com)

### USA

**Hyper-Imaging**  
Irving, TX - Tel. +1 949 233 2433  
[www.hyper-imaging.com](http://www.hyper-imaging.com) - [douglas.cebik@hyper-imaging.com](mailto:douglas.cebik@hyper-imaging.com)

### JAPAN

**TOYO Corporation**  
1-6, Yaesu 1-chome, Chuo-ku, Tokyo 103-8284, JAPAN  
Tel. +81-3-3279-0771 - Fax +81-3-5205-2030  
[www.toyo.co.jp](http://www.toyo.co.jp)

### BENELUX - SPAIN - PORTUGAL

**IDT Europe bvba**  
Eekhoornstraat 22 - B-3920 Lommel, BELGIUM  
Tel. +32 11 551065  
[www.idteurope.eu](http://www.idteurope.eu) - [info@idteurope.eu](mailto:info@idteurope.eu)

### UK

**IDT (UK) Ltd**  
Eastway House - 7 Paynes Park, Hitchin  
Herts SG5 1EH, UNITED KINGDOM  
Tel. +44 (1462) 621124  
[www.idtvision.co.uk](http://www.idtvision.co.uk) - [drudeforth@idtvision.com](mailto:drudeforth@idtvision.com)